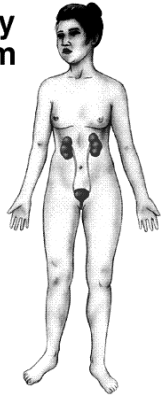


Urinary System



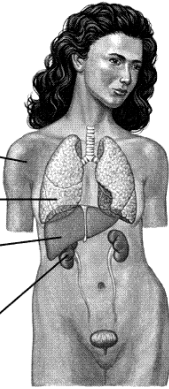
Organs of Excretion

Skin excretes water and salts in perspiration.

Lungs excrete carbon dioxide as a gas.

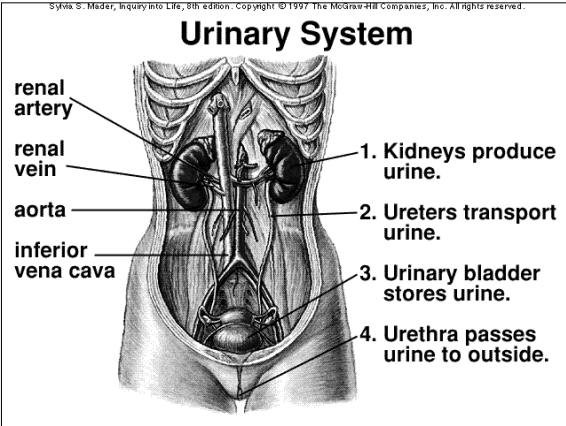
Liver excretes bile pigments in bile.

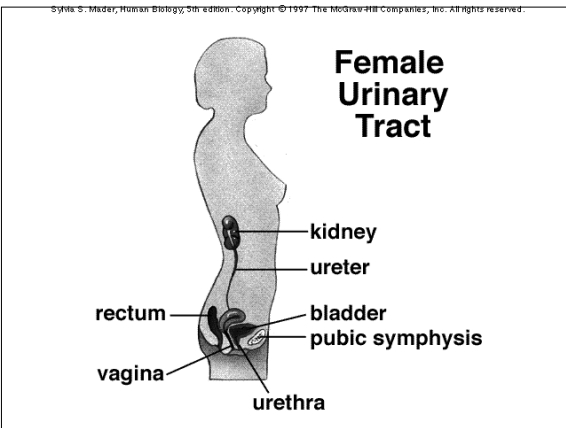
Kidneys excrete nitrogenous wastes in urine.

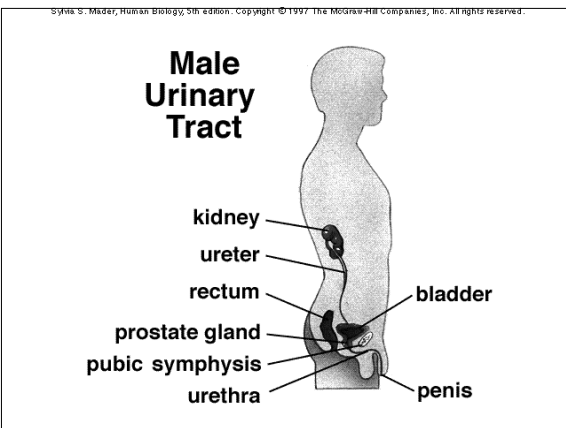


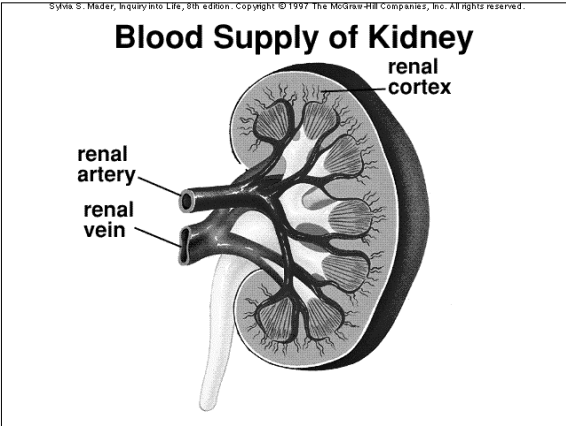
Urinary System Functions

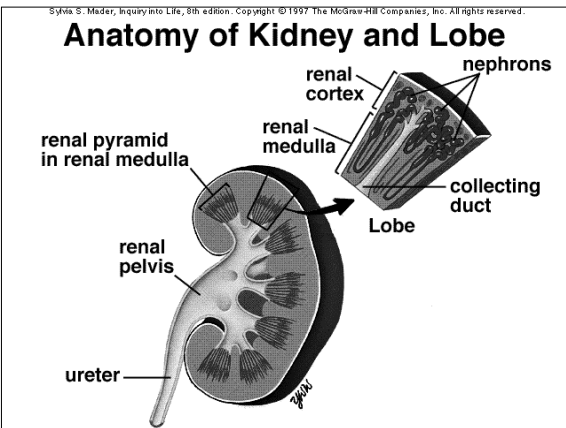
- Excrete nitrogenous wastes
- Regulate blood volume
- Regulate blood electrolytes
- Regulate blood pH

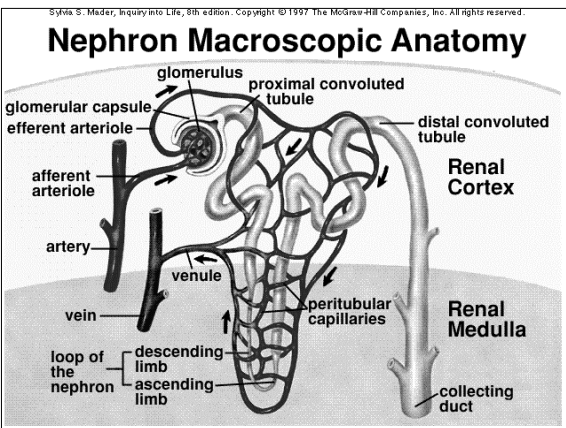


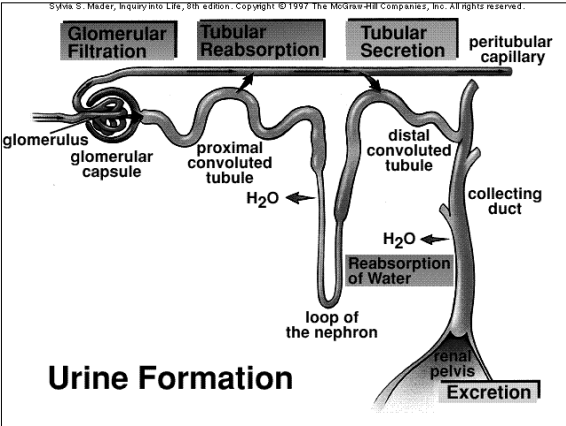


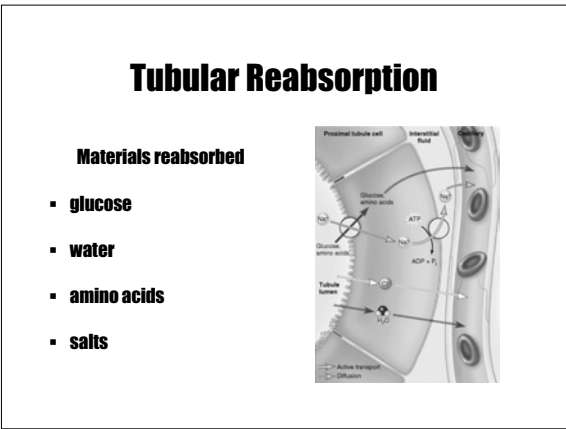


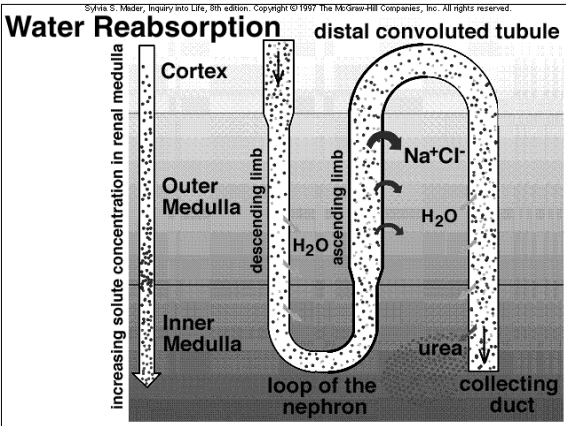


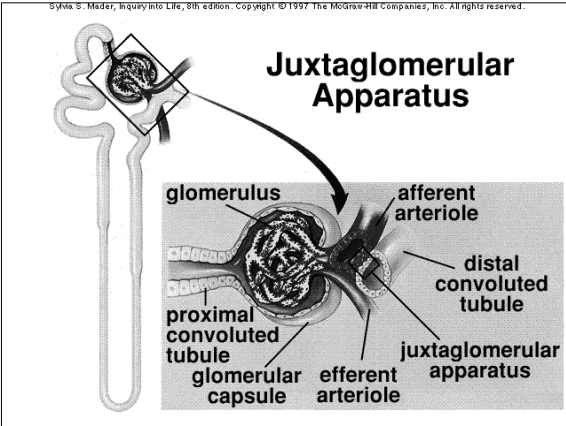


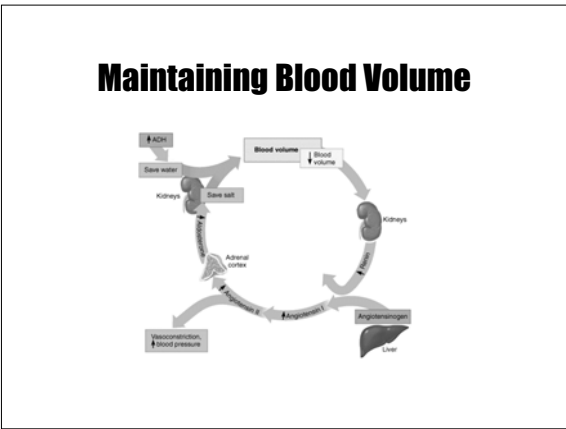


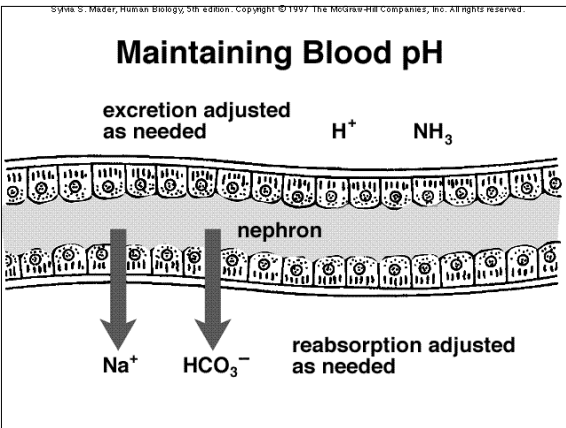


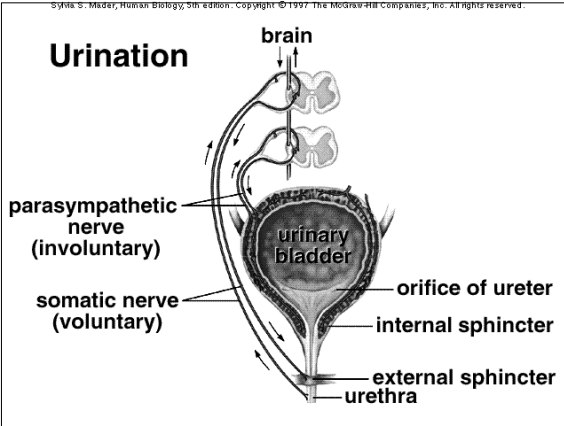






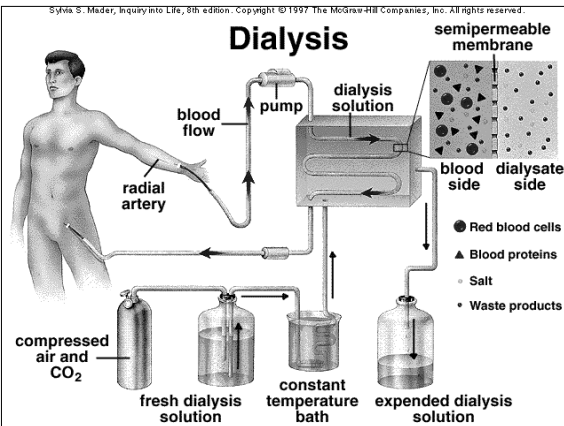






Characteristics of Normal Urine

Characteristic	Description
Volume	1-2 liters/day
Color	Yellow or amber
Turbidity	Transparent
Odor	Mildly aromatic
pH	4.6 - 8.0 (Ave 6.0)
Specific gravity	1.001 - 1.035



The End.
